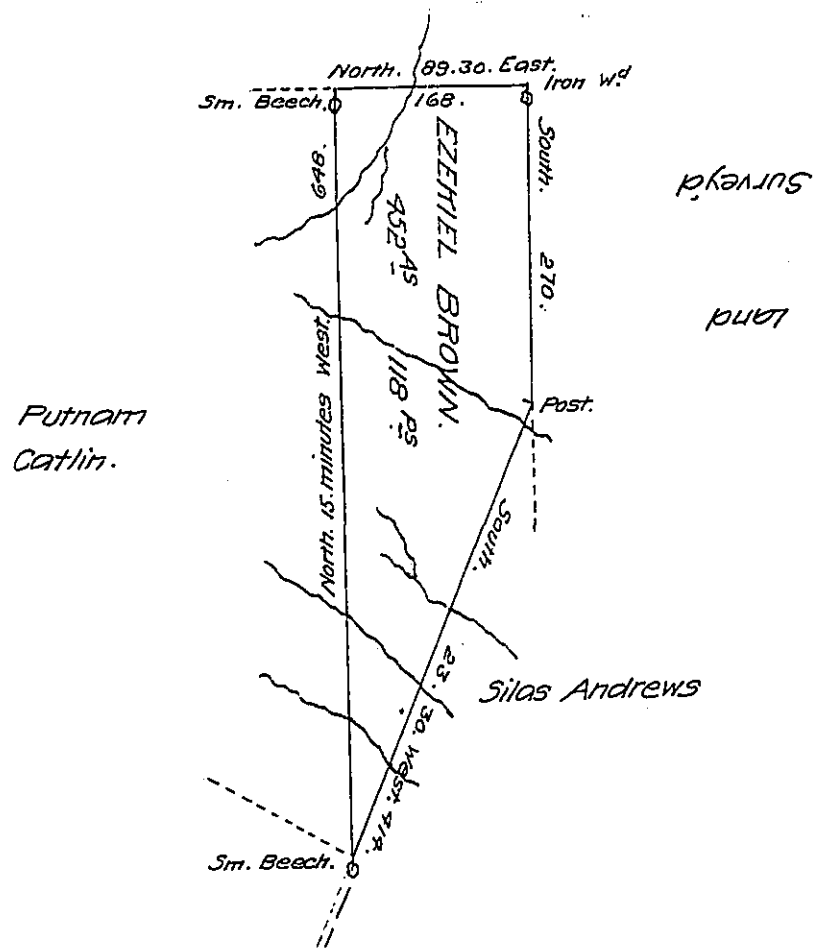


for Capt. Nolley.



called Nordale
 Draught of a Tract of Land, situate on the Waters of Wyalosing Creek in the County
 of Luzerne and adjoining Land Surveyed for Silas Andrews containing Four hun-
 dred and Fifty two Acres and One hundred and Eighteen Perches and the
 usual Allowance of Six per Centum for Roads surveyed for Ezekiel Brown the
 13th Day of August 1807 in pursuance of a Warrant bearing Date the 12th Day of
 February 1793.

Thos Sambourne D^y S^r

To Samuel Cochran Esq^e
 Surveyor General.

IN TESTIMONY that the above is a copy of the original remaining on file in
 the Department of Internal Affairs of Pennsylvania, made
 conformably to an Act of Assembly approved the 16th day of
 February, 1833, I have hereunto set my Hand and caused
 the Seal of said Department to be affixed at Harrisburg,
 this twenty fifth day of February 1908.

Henry Howell
 Secretary of Internal Affairs.